

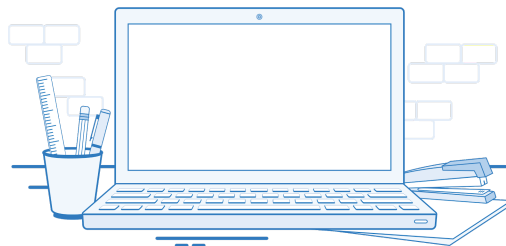
BYOD* Advice for Parents



- ❖ Section 1 | **General Advice**
- ❖ Section 2 | **Minimum Specifications for Devices**
- ❖ Section 3 | **Advantages & Disadvantages of Each Device**

Section 1 | **General Advice**

- There is no one device that is suitable for all students.
- Some students prefer working on an iPad, “because it is fast and easy to use. It has all the functions that are required for class as well,” according to one student. However, others prefer a laptop, especially when typing up assignments for NCEA, “I found moving to a laptop really helped with my essays”.
- In consequence, students may bring either a **MacBook**, a **Windows laptop**, an **iPad with a keyboard** or a **Chromebook** as their digital learning device.
- It is worth considering, (if budget allows), that **active pencils** (also called a stylus or Apple Pencil) in conjunction with touch screens (example iPad, Windows Surface Pro) enable creativity, sketching, drawing, and the annotation of digital documents and images.
- Older devices (below our recommended specifications) are not suitable, as they often become slow, have poor battery capacity and cannot upgrade to the latest software. Older devices can therefore lead to frustration and adversely affect student learning.
- **A phone is not allowed in class** (in any case, they are not suitable for learning).
- Since 2014 the iPad had been our preferred device, but students were always allowed to bring other devices. Following a comprehensive review, technology developments over recent years and our experience with students on other devices, **we are now confident that students will be able to complete their online tasks in years 9 & 10 on any of the devices listed in the table below.**
- Many students do upgrade their devices during their five years at MAGS. If your child currently has a device from intermediate school, we recommend that they continue to use that device for years 9 & 10, then move to a laptop because of the amount of typing required for NCEA assignments.
- **A MacBook is an excellent choice for year 11-13.** The great majority of seniors who move to a laptop choose a MacBook. We realise the MacBook Air and Pro are both expensive, but PB Tech and Dick Smith (online) do offer refurbished models. Cyclone Computing also has educational pricing.
- [This page for special deals for Mount Albert Grammar School families](#) from both Cyclone and PB Tech will be updated by the start of November each year. The portals will indicate the relevant pricing.
- We are currently testing Windows devices and Chromebooks in order to ensure the devices in the Cyclone and PB Tech portals are indeed suitable. We already are fully aware of the quality performance of MacBooks and iPads.
- * *BYOD means ‘Bring Your Own Device’ - and have it registered for use on the school network.*



Section 2 | Minimum Specifications for Devices

Device	Specifications (please check it has a camera and microphone)	Price range (full details Nov 1st)	Expected life
MacBook	All are suitable (Air and Pro models)	Higher	4-5 years
Windows	Windows 10, 4GB RAM or better 128GB hard drive or larger (SSD drives preferred over HDD), 2.4GHz processor or higher.	Medium to high	3 years
iPad (& Keyboard)	iPad 6 th or 7 th Generation. 128GB storage recommended. Keyboard required. Apple Pencil highly recommended.	Medium to high	4-5 years
Chromebook	4GB RAM, 32GB storage or better	Lower	2-3 years

NOTE: Specific Subject Requirements: If your child is doing media studies, photography or art design and wishes to have a yearly education **Adobe** Creative Cloud subscription, a MacBook or a Windows laptop is required and it should have at least 8GB RAM and a 256GB SSD hard drive. The Windows processor needs to be 2.4GHz or faster. A MacBook Air works well, but the MacBook Pro will give you more “grunt” and will process quicker.

Section 3 | Advantages & Disadvantages of Each Device

Device	Advantages	Disadvantages
iPad	<ul style="list-style-type: none"> • A 'creative' device allowing for drawing, annotating etc with Apple Pencil • Compact, easy to carry • Excellent for taking images & video • Excellent movie editing software • Touch screen, drawing capability • Quick access to apps needed • Turns on with no wait time • Excellent battery life • Has many educational apps 	<ul style="list-style-type: none"> • Simplified versions of some apps (esp Adobe Creative Cloud) • Problems with some apps harder to use on an iPad • Students without a keyboard find typing on screen slower and the digital keyboard covers up most of the screen • Smaller screen on some models • Temptation to play any offline games on the iPad (a distraction)
Laptops MacBook & Windows	<ul style="list-style-type: none"> • Bigger screen • Usually has more storage • Keyboard allows faster typing • Better for multitasking with multiple tabs • Fuller versions of apps • Wifi antenna better than tablets • Will run full Adobe software versions • Staff use Mac laptops, also the preferred choice for most seniors 	<ul style="list-style-type: none"> • More difficult to take images & videos • More difficult/heavier to carry around • Some excellent Apple apps like Garageband & iMovie are not available on Windows laptops • Some Windows laptop batteries not long-lasting, but this has improved • Windows laptops: Time spent starting up & shutting down, especially if updates are required
Chromebook	<ul style="list-style-type: none"> • Essential a web browser device • Less expensive • Some are touch screen • Has a keyboard 	<ul style="list-style-type: none"> • Can only be used as a browser, with limited offline capability • Cannot run full Adobe, Sibelius, Fusion 360, etc. (software used at MAGS by students) • Can only run online versions of programs, e.g. OneNote, MS Word which have fewer features.

For a full list of MAGS recommended websites and Apps please go to the MAGS website after 1st November each year